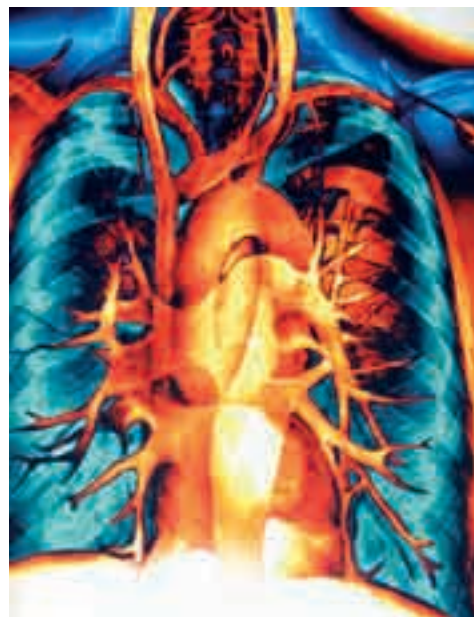


Cell to Structure - Cross-disciplinary Jeweller's Workshop

Cell to Structure is a workshop that will be delivered by Biologists, Jewellers, and Architects, aiming to look at jewellery from three different perspectives - within the body, on the body, and around the body. Over five days, talks will be given by leading professionals in their fields, informing participants of inspiring new viewpoints of the body in alternative contexts. These talks will be complemented by minor practical workshops throughout the week. The last two days will comprise of supervised time within a fully equipped jewellery workshop to prototype ideas into working models. These models will be displayed in an exhibition that coincides with the 2006 JMGA Conference, and ties in with the conference theme of *siting, citing, sighting*, through an exploration of varied viewpoints out of traditional jewellery practice.



The venue will be the well-equipped workshop of Sydney Institute's Jewellery and Object Design studios at The Design Centre, Enmore. The presenters include: Professor Stuart Bunt (Cellular Neurobiologist and Scientific Director of SymbioticA - a collaborative art and biotechnology laboratory, University of Western Australia); Professor Miranda Grounds (Tissue Engineer, Artist and Co-Director of SymbioticA, University of Western Australia); Julie Blyfield (Jeweller at Gray Street Workshop, South Australia); Professor Tom Heneghan (Architect, Urban Planner and Chair of Architecture at Sydney University); and Dagmar Reinhardt (Architect, Artistic collaborator and International speaker). Members of the The Design Centre staff will also be on hand to assist the participants with practical aspects of the workshop.



We are currently seeking participants for the workshop which will be held over five days, 16 – 20 January, 2006. The cost will be \$600, or \$400 for full-time students. Those interested should submit an expression of interest along with 2 - 3 images of recent work, c/o Sean O'Connell, Cell to Structure workshop, Jewellery and Object Design, Design Centre Enmore, 110 Edgeware Road, Enmore, NSW, 2042. A deposit of 50%, cheques made out to Design Centre Enmore, will secure a place in the workshop, but as places are limited to 15 maximum, please confirm early. All enquiries regarding the workshop should be directed to Sean O'Connell (c/o the Design Centre) or email, sean@oneorangedot.com.

